

**CHAPTER**

**80**

**STARTING**

CESSNA®  
**MODEL 208**  
ILLUSTRATED PARTS CATALOG

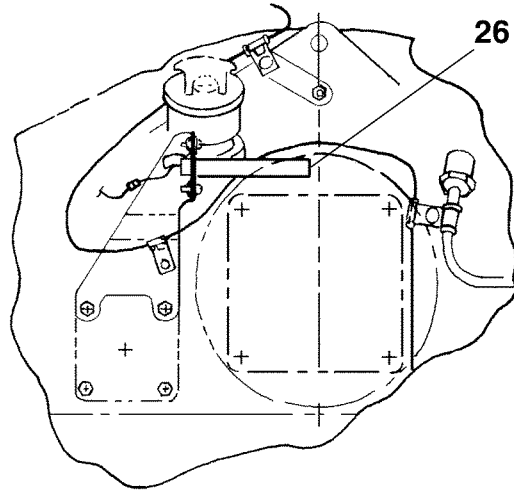
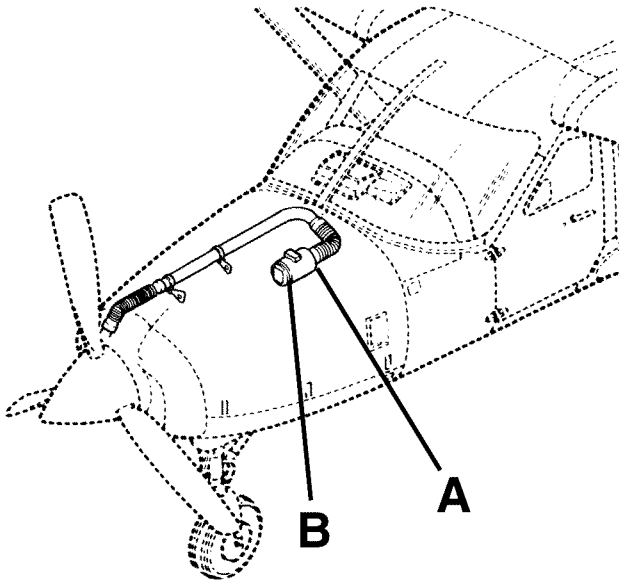
<u>CHAPTER SECTION SUBJECT</u>		<u>NUMBER OF PAGES</u>	<u>DATE</u>
80 - TITLE			
80 - LIST OF EFFECTIVE PAGES			
80 - RECORD OF TEMPORARY REVISIONS			
80 - TABLE OF CONTENTS			
80-10-01	Figure 01	2	Sep 1/2017
80-10-01	Figure 02	2	Sep 1/2017
80-10-01	Figure 03	2	Mar 1/2015

CESSNA®  
**MODEL 208**  
 ILLUSTRATED PARTS CATALOG

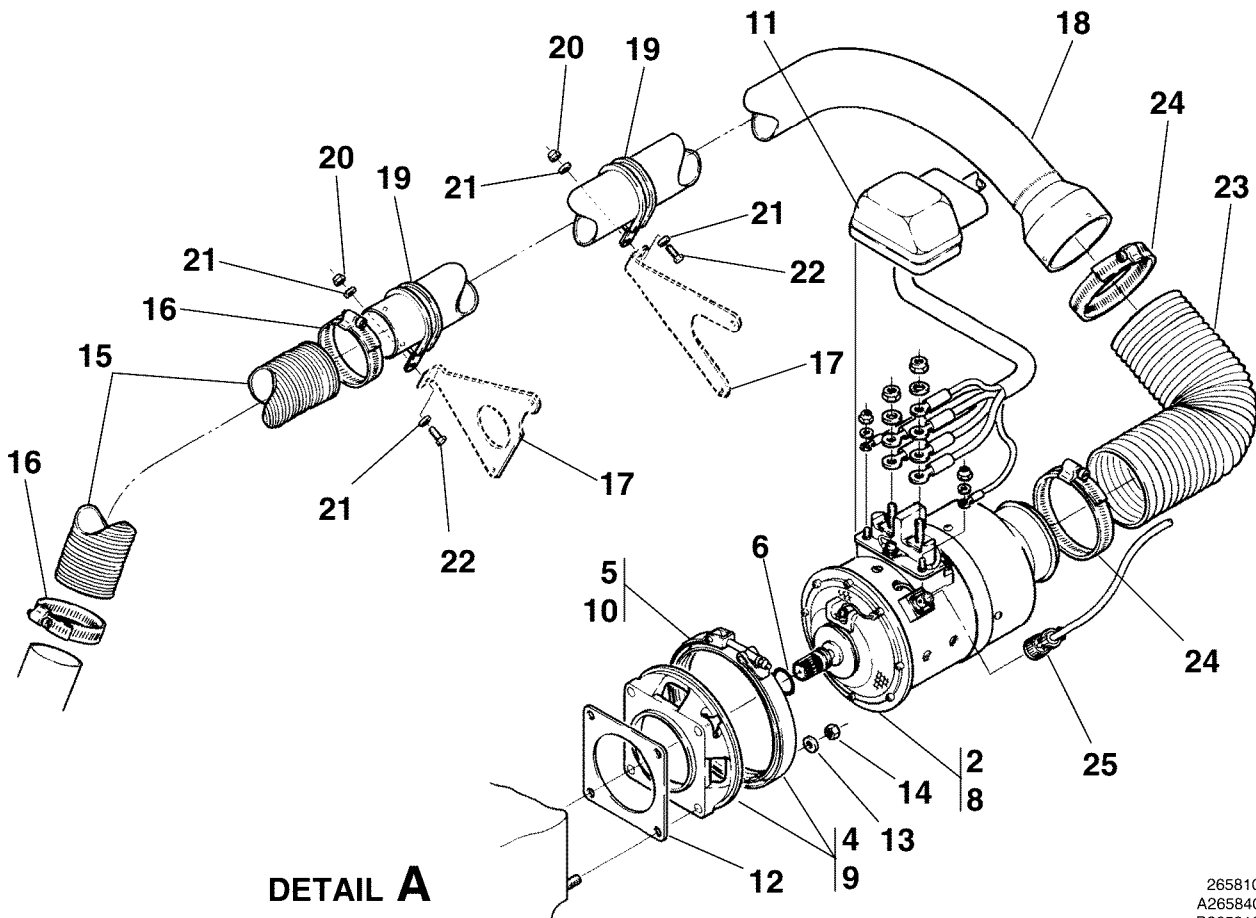
<u>SUBJECT</u>	<u>CHAPTER SECTION SUBJECT</u>	<u>FIGURE</u>	<u>EFFECTIVITY</u>	
			<u>START</u>	<u>END</u>
STARTER/GENERATOR INSTALLATION	80-10-01	01		
STARTER/GENERATOR INSTALLATION - 300 AMP	80-10-01	02	0001	& ON
			B0001	& ON
STARTER/GENERATOR INSTALLATION - 200 AMP 867HP	80-10-01	03	B5000	& ON

CESSNA®  
**MODEL 208**  
 ILLUSTRATED PARTS CATALOG

A24578



**DETAIL B**  
 VIEW LOOKING FORWARD



**DETAIL A**

STARTER/GENERATOR INSTALLATION  
 FIGURE 01 (SHEET 1)

26581004  
 A26584001  
 B26581003

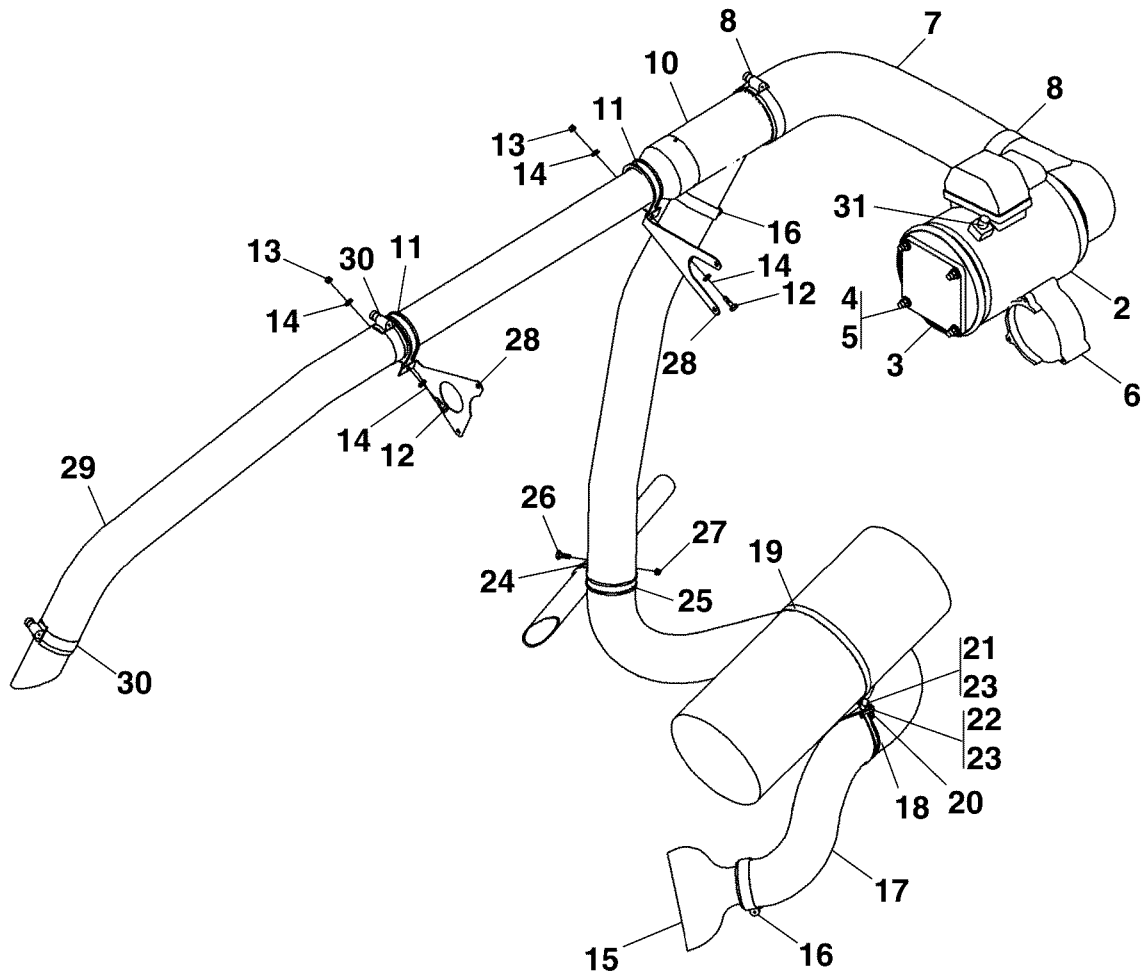
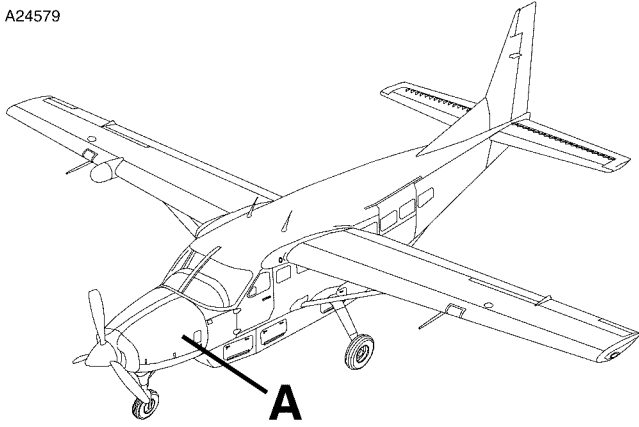
**CESSNA®**  
**MODEL 208**  
**ILLUSTRATED PARTS CATALOG**

FIG ITEM	PART NUMBER	NOMENCLATURE	1 2 3 4 5 6 7				UNITS PER ASSY
01		STARTER/GENERATOR INSTALLATION					RF
- 1	23081-022	. GENERATOR-STARTER ASSY FSO 23081-22A . . . . .	V31435	0001	0245		01
- 1A	23081-022A	. GENERATOR-STARTER ASSY REFER TO NOTE 1 . . . . .	V31435	B0001	B0490		01
2	23081-023	. . GENERATOR-STARTER . . . . .	V31435	0246	& ON		01
- 2A	23081-023A	. . GENERATOR-STARTER . . . . .	V31435	B0491	& ON		01
- 3	30300-1380	. . BRUSH . . . . .	V31435	0001	0245		04
4	23032-0506	. . KIT-QUAD MOUNTING . . . . .	V31435	B0001	B0490		01
5	23032-1586	. . CLAMP . . . . .	V31435				01
6	M83248/1-113	. . O-RING . . . . .					01
- 6A	300SGL145Q-1	. GENERATOR-STARTER KIT . . . . .	V32970	B0741	B0741		01
- 6B	300SGL145Q	. . GENERATOR-STARTER . . . . .	V32970	B0741	B0741		01
- 6C	300SG1083	. . QUAD ADAPTER . . . . .					AR
- 7	200SGL119Q-1	. GENERATOR-STARTER KIT FSO 200SGL153Q-1 REFER TO NOTE 1 . . . . .	V32970	0211	0359		NP
8	200SGL119Q	. . GENERATOR-STARTER FSO 200SGL153Q . . . . .	V32970	B0291	B0970		NP
- 8A	200SGL153Q	. . GENERATOR-STARTER . . . . .	V32970				01
9	200SGL1083-2	. . QUAD KIT . . . . .	V32970				01
10	150SG1108	. . CLAMP . . . . .	V32970				01
- 10A	200SGL119Q-2-1	. GENERATOR-STARTER KIT FSO 200SGL153Q-1 . . . . .	V32970	0360	0544		NP
				B0971	B2420		
				B2430	B2430		
				B2434	B2434		
- 10B	200SGL153Q-1	. GENERATOR-STARTER KIT . . . . .	V95270	0545	& ON		01
				B2421	& ON		
- 10C	200SGL119Q-2	. . GENERATOR-STARTER FSO 200SGL153Q . . . . .	V32970				NP
- 10D	200SGL153Q	. . GENERATOR-STARTER . . . . .	V32970				01
- 10E	200SGL1083-2	. . QUAD KIT . . . . .	V32970				01
- 10F	200SGL1040-2	. . . QUAD MOUNT . . . . .					AR
- 10G	150SG1108	. . CLAMP . . . . .					AR
11	200SGL1318	. . COVER-TERMINAL . . . . .	V95270				01
12	AN4044-1	. GASKET . . . . .					01
13	NAS1149C0532R	. WASHER . . . . .					04
14	MS21042L5	. NUT . . . . .					04
15	S1053K16T	. DUCT 26.00 IN LG BKI . . . . .					01
		ATTACHING PARTS					
16	S1891-32S	. CLAMP . . . . .					02
		—*—					
17		. MOUNTING BRACKET-TUBE ASSY FORWARD & AFT REFER TO 71-60-01 FIGURE 01 . . . . .					RF
18	2650012-5	. DUCT ASSY . . . . .					01
		ATTACHING PARTS					
19	MS21919DG32	. CLAMP . . . . .					02
20	MS21042L3	. NUT . . . . .					02
21	NAS1149F0363P	. WASHER . . . . .					04
22	AN3-5A	. BOLT . . . . .					02
		—*—					
23	S1053K24T	. DUCT 12.00 IN LG BKI . . . . .					01
		ATTACHING PARTS					
24	S1891-48S	. CLAMP . . . . .					02
		—*—					
25	AE776L8-3S	. CONNECTOR . . . . .					01
- 25A	M85049/52-1-08N	. STRAIN RELIEF USED WITH AE776L8-3S CONNECTOR . . . . .					01
26		. OVERHEAT SWITCH REFER TO 24-36-02 FIGURE 01A . . . . .					RF R

NOTE 1—EITHER THE LUCAS STARTER/GENERATOR (P/N 23081-022A) OR THE APC STARTER/GENERATOR (P/N 200SGL119Q-1) MAY BE USED FOR SPARES. THE QAD KIT/ADAPTOR MUST BE REPLACED WITH THE STARTER/GENERATOR. CORE CREDIT MAY NOT APPLY IF SWITCHING VENDORS.

CESSNA®  
**MODEL 208**  
ILLUSTRATED PARTS CATALOG

A24579



**DETAIL A**

STARTER/GENERATOR INSTALLATION - 300 AMP  
FIGURE 02 (SHEET 1)

2610T7004  
A2658T1003

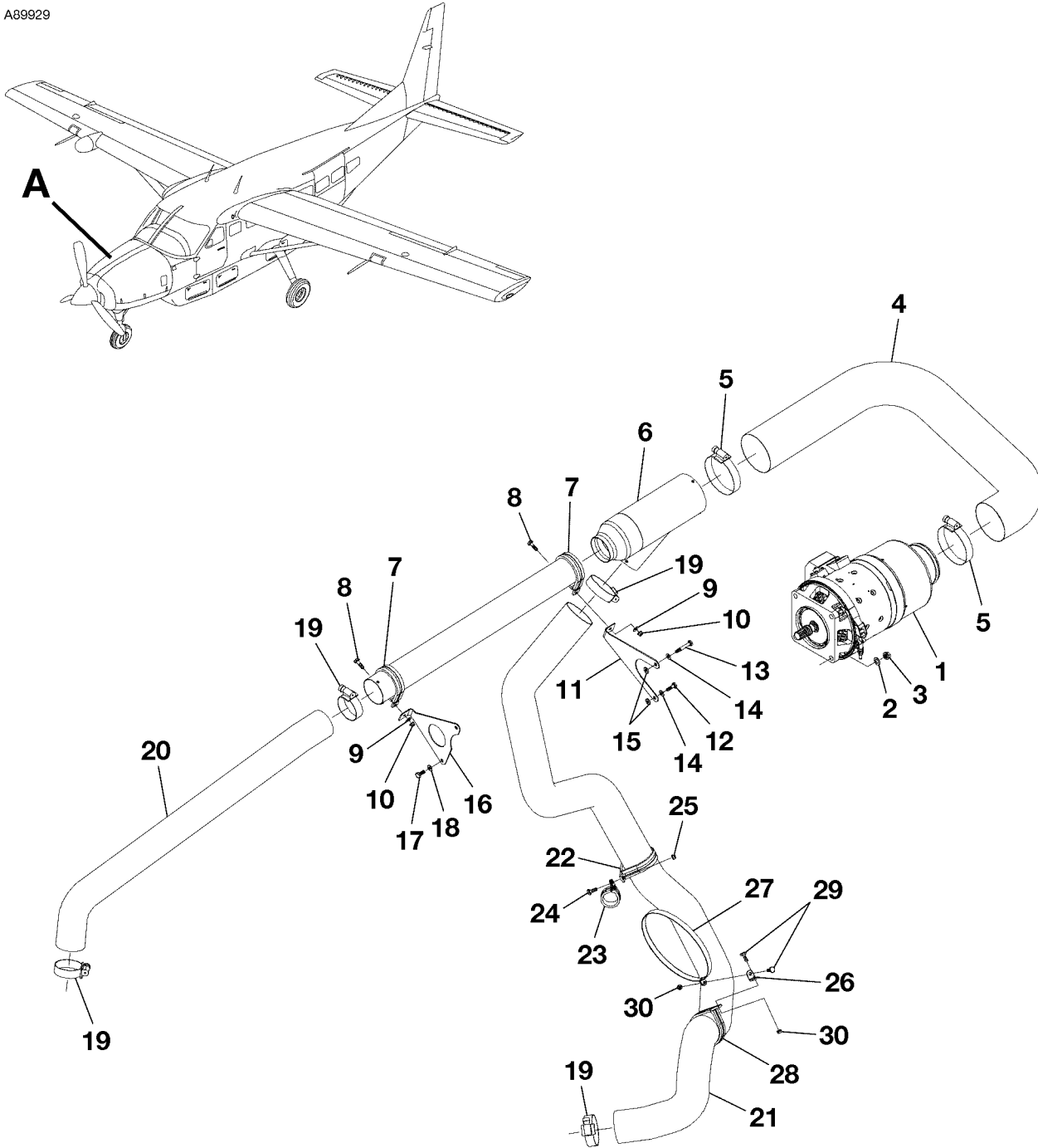
**CESSNA®**  
**MODEL 208**  
**ILLUSTRATED PARTS CATALOG**

FIG ITEM	PART NUMBER	NOMENCLATURE	UNITS PER ASSY		
			1	2	3
02		STARTER/GENERATOR INSTALLATION - 300 AMP			
-			0001	& ON	RF
			B0001	& ON	
- 1	300SGL145Q-1	. GENERATOR-STARTER ASSY REFER TO NOTE 1 . . . . .	V32970		01
2	300SGL145Q	. . GENERATOR-STARTER . . . . .	V32970		01
- 2A	M83248/1-113	. . O-RING . . . . .			01
3	300SGL1083-2	. . QAD ADAPTOR . . . . .	V32970		01
- 3A	AN4044-1	. . GASKET REFER TO 80-10-01 FIGURE 01 FSO MS9135-01 . . . . .			NP
- 3B	ST3277-01	. . GASKET REFER TO NOTE 1 . . . . .			01
- 3C	MS9135-01	. . GASKET FSO AS3492-01 . . . . .			NP R
- 3D	AS3492-01	. . GASKET SPARES . . . . .			01 R
4	NAS1149C0532R	. . WASHER . . . . .			04
5	MS21042L5	. . NUT REFER TO NOTE 1 . . . . .			04
6		. . DRIVE ASSY-COMPRESSOR REFER TO 21-51-01 FIGURE 01 . . . . .			RF
7	S1053K24T	. . DUCT 21.30 IN LG BKI . . . . .			01
		. . ATTACHING PARTS			
8	S1891-48S	. . CLAMP . . . . .			02
		. . * . . . .			
- 9		. . DELETED-NOT USED . . . . .			
10	2650109-5	. . PLENUM ASSY FSO 2650109-9 . . . . .	0001	0510	NP
			B0001	B2109	
- 10A	2650109-9	. . PLENUM ASSY . . . . .	0511	& ON	01
			B2110	B4999	
		. . ATTACHING PARTS			
11	MS21919DG32	. . CLAMP . . . . .			02
12	AN3-5A	. . BOLT . . . . .			02
13	MS21042L3	. . NUT . . . . .			02
14	NAS1149F0363P	. . WASHER . . . . .			04
		. . * . . . .			
15		. . PANEL ASSY-SCOOP OPT REFER TO 71-10-00 FIGURE 03 . . . . .			RF
		. . ATTACHING PARTS			
16	S1891-32S	. . CLAMP . . . . .			02
		. . * . . . .			
17	S1053K18W	. . DUCT 61.0 IN LG BKI . . . . .			01
		. . ATTACHING PARTS			
18	AN735D96	. . CLAMP . . . . .			01
19	MS21919WDG36	. . CLAMP . . . . .			01
20	AN743-12	. . BRACKET . . . . .			01
21	AN3-3A	. . BOLT . . . . .			01
22	AN3-4A	. . BOLT . . . . .			01
23	MS21042L3	. . NUT . . . . .			02
24	MS21919WDF17	. . CLAMP . . . . .			01
25	MS21919WDG36	. . CLAMP . . . . .			01
26	AN3-4A	. . BOLT . . . . .			01
27	MS21042L3	. . NUT . . . . .			01
		. . * . . . .			
- 27A	NAS1291-3	. . NUT-ALT FOR MS21042L3 . . . . .			01
28		. . MOUNTING BRACKET-TUBE ASSY FWD AND AFT REFER TO 71-60-01 FIGURE 01 . . . . .			RF
29	S1053K16T	. . DUCT 26 IN LG BKI . . . . .			01
		. . ATTACHING PARTS			
30	S1891-32S	. . CLAMP . . . . .			02
		. . * . . . .			
31	AE776L8-3S	. . CONNECTOR . . . . .			01
- 32	M85049/52-1-08N	. . STRAIN RELIEF USED WITH AE776L8-3S CONNECTOR . . . . .			01

NOTE 1—AIRPLANES -0001 & ON AND -B0001 AND ON, AND AIRPLANES -B5000 AND ON INCORPORATING CAB-80-01.

CESSNA®  
**MODEL 208**  
ILLUSTRATED PARTS CATALOG

A89929



**DETAIL A**

STARTER/GENERATOR INSTALLATION - 200 AMP 867HP  
FIGURE 03 (SHEET 1)

2610T7004  
A2650T1015



**CESSNA®**  
**MODEL 208**  
**ILLUSTRATED PARTS CATALOG**

FIG ITEM	PART NUMBER	NOMENCLATURE	1 2 3 4 5 6 7							UNITS PER ASSY	
03		STARTER/GENERATOR INSTALLATION - 200 AMP 867HP								B5000 & ON	RF
-	1	200SGL153Q-1	.							V95270	01
-	1A	300SGL145Q-1	.							V32970	01 R
		ATTACHING PARTS									
	2	NAS1149C0532R	.								04
	3	MS21042L5	.								04
-	3A	NAS1291-5	.								04
		—*—									
	4	S1053K24T30.0	.								01
	5	S1891-48S	.								02
	6	2650109-9	.								01
	7	MS21919WDG32	.								01
		ATTACHING PARTS									
	8	AN3-5A	.								02
	9	NAS1149C0332R	.								02
	10	MS21042L3	.								02
-	10A	NAS1291-3	.								02
		—*—									
	11	2650012-8	.								01
		ATTACHING PARTS									
	12	AN3-5A	.								01
	13	AN3-12A	.								01
	14	NAS1149C0332R	.								02
	15	NAS1149C0363R	.								02
		—*—									
	16	2650012-6	.								01
		ATTACHING PARTS									
	17	AN3-4A	.								02
	18	NAS1149C0332R	.								02
		—*—									
	19	S1891-32S	.								04
	20	S1053K16T26.0	.								01
	21	S1053K18W61.0	.								01
	22	MS21919WDG36	.								01
	23	MS21919WDG17	.								01
		ATTACHING PARTS									
	24	AN3-4A	.								01
	25	MS21042L3	.								01
-	25A	NAS1291-3	.								01
		—*—									
	26	AN743-12	.							V81343	01
	27	AN735D96	.							V81343	01
	28	MS21919WDG36	.								01
		ATTACHING PARTS									
	29	AN3-4A	.								01
	30	MS21042L3	.								01
-	30A	NAS1291-3	.								01
		—*—									

NOTE 1—REFER TO 80-10-01 FIGURE 02 FOR INSTALLATION OF 300 AMP STARTER/GENERATOR

NOTE 2—AIRPLANES -B5000 AND ON INCORPORATING CAB-80-01.

R